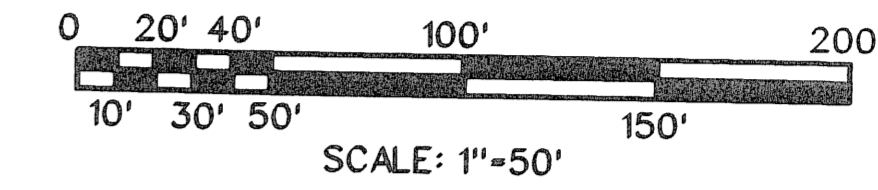
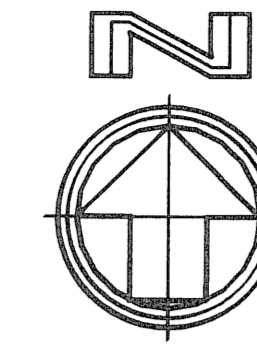


CARNAHAN · PROCTOR · CROSS, INC.
 CONSULTING ENGINEERS · SURVEYORS · PLANNERS
 6101 WEST ATLANTIC BOULEVARD, MARGATE, FLORIDA 33063
 PHONE: 954-972-3959 FAX: 954-972-4178
 JUNE 2005 030402 JM

OXLEY NORTHERN PUD

A PORTION OF THE NORTHEAST ONE-QUARTER OF SECTION 34, TOWNSHIP 46 SOUTH, RANGE 42 EAST, PALM BEACH COUNTY, FLORIDA



174

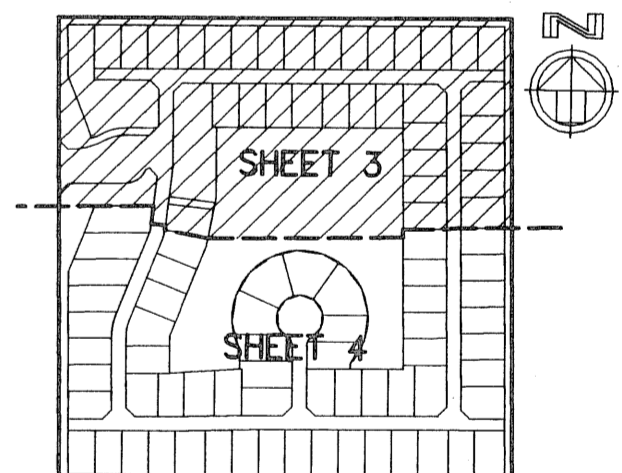
SHEET 3 OF 4

P.O.C.
 N.W. CORNER
 N.E. 1/4 SECTION
 34-46-42
 (NOT FOUND)
 N 760788.209
 E 935486.534

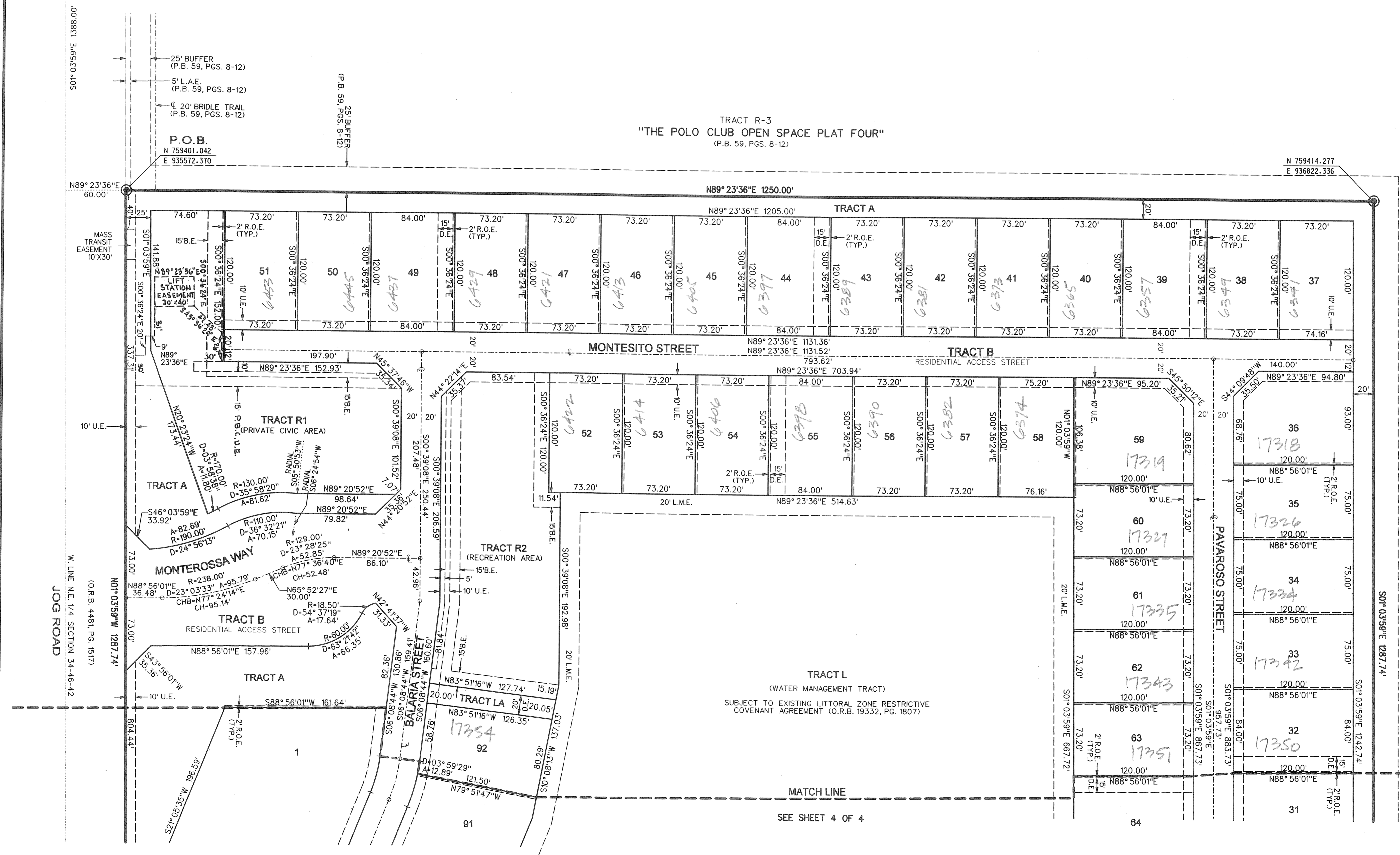
P.O.B.
 N 759401.042
 E 935572.370

TRACT R-3
 "THE POLO CLUB OPEN SPACE PLAT FOUR"
 (P.B. 59, PGS. 8-12)

- LEGEND**
- SET PERMANENT REFERENCE MONUMENT (P.R.M.) *LB2936 UNLESS OTHERWISE NOTED
 - PERMANENT CONTROL POINT (P.C.P.)
 - ⊕ CENTERLINE
 - ARC LENGTH
 - BUFFER EASEMENT
 - BUILDING
 - CHORD BEARING
 - CHORD LENGTH
 - DELTA (CENTRAL ANGLE)
 - DRAINAGE EASEMENT
 - LIMITED ACCESS EASEMENT
 - LAKE MAINTENANCE EASEMENT
 - LAKE WORTH DRAINAGE DISTRICT
 - NON-RADIAL
 - OFFICIAL RECORDS BOOK
 - PAGE
 - PLAT BOOK
 - PALM BEACH COUNTY RECORDS
 - POINT OF BEGINNING
 - POINT OF COMMENCEMENT
 - PLANNED UNIT DEVELOPMENT
 - RADIUS
 - ROOF OVERHANG EASEMENT
 - RIGHT-OF-WAY
 - SQUARE FEET
 - TYPICAL
 - UTILITY EASEMENT



TRACT R-3
 "THE POLO CLUB OPEN SPACE PLAT FOUR"
 (P.B. 59, PGS. 8-12)



SEE SHEET 4 OF 4

OXLEY NORTHERN
 SHEET 174
 PLAT 174
 DATE: 05-04-05 10:35
 FILE: s:\030402\030402pp3.dgn